



SUPrema



THE OPEN ACCESS CONTROL AND SECURITY PLATFORM



CredoID

is a comprehensive and reliable access control and security software. By leveraging open platform hardware, providing REST API for integrations and extensive tools for automation, we make system integrators' life easier without compromise on security.

A powerful package

CredoID is more than just an access control and security suite. Standard features are no longer enough in a fast-moving world. Therefore, CredoID includes powerful tools for process automation: scheduled operations, custom alerts, trigger-based rules and even a scripting engine.

Trigger rules help you customize system behavior based on event data. Send notifications, toggle alarms, lock or unlock doors depending on event type, time or reason.

If you need even more power over system behavior, scripting engine is available. Build custom logic, interlock clusters of doors, count users, manage groups of customers or create a guard tour – all the power is at your fingertips.

WHAT DO YOU GET?

Industry-leading technologies

CredoID is built for the open hardware from Mercury Security and HID Global, the indisputable leaders in access control technology. A wide range of devices – from Mercury EP and LP series boards, classic HID Edge EVO and VertX EVO, to the latest HID AERO controllers and even Suprema CS-40 – are supported in CredoID.

STid and HID mobile credential management is integrated directly in CredoID. Pick STid Architect or HID R-series or Signo readers and enjoy convenience and freedom of Mobile IDs.

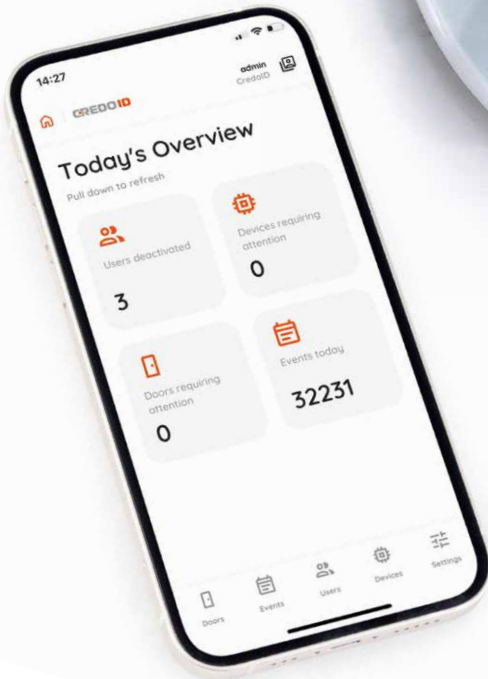
Grade 3 intrusion protection system from Dutch company ASB Security works in tandem with access control, and can be armed / disarmed seamlessly from any reader or CredoID UI.

Aperio IP hubs and wireless locks from Assa-Abloy are supported for cost-effective building upgrades.

Rugged mobile devices from French company Copernic feature integrated HID iClass, STid (Mifare) or UHF readers, and enable easy deployment of reliable access control and time-and-attendance solution in remote, hazardous or temporary locations.

On software front, we have teamed-up with equally impressive partners. SPLAN integration provides a comprehensive visitor management solution, DOOR-TABLET ensures in-building navigation, conference room / parking / workspace reservation system. DIGIFORT and LENSEC Perspective VMS integrations provide license plate recognition, event clip recording and even PTZ camera control via HTTP requests.





Cloud-ready and secure platform

CredolD v4 provides a comprehensive toolset for Cloud services. Available as a standalone installer or in Docker containers for Windows or Linux and featuring floating license engine, CredolD can be deployed in high-availability VM setups just as easily as it is on a single machine.

Being accessible does not compromise security. CredolD follows security hardening recommendations from HID Global and Mercury security. It uses end-to-end encrypted communication from web or mobile clients to access control readers and controllers, which ensures secure usage of the system.

Easy to setup and use

CredolD is quick to install and easy to learn, both for integrators and end-users. It uses clear, universally accepted icons and color schemes for communication. Just a simple installer will get the whole system with background database up and running in minutes.

CredolD user interface adapts to each Operator based on their permissions.

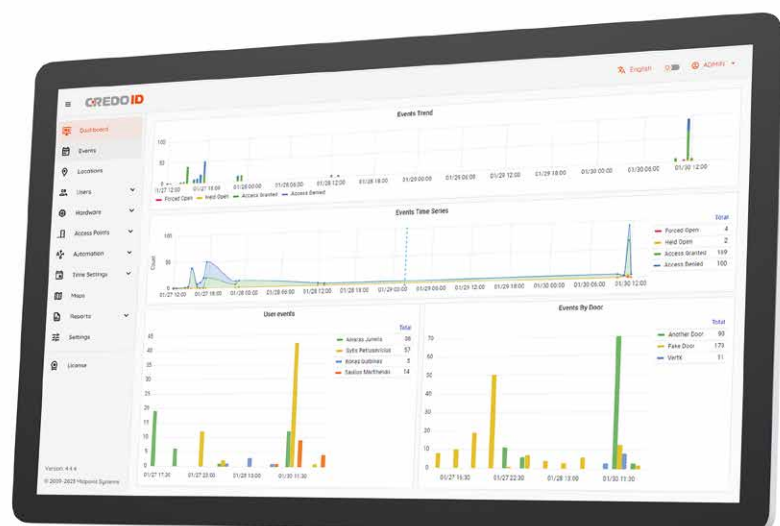
Need to setup an autonomous administrator for your new building? No problem, just add a new Location! Your HR department needs access to reports only? Easy, assign a viewing permission to HR manager. Do you have constantly rotating security staff? No need to spend long days in training - it will only take a few minutes to prepare a new guard for the task.

And did we mention you're no longer bound by your computer screen? CredolD Mobile Manager App for both iOS and Android is free to use with CredolD server, and brings key CredolD controls to your phone.

High performance and scalability

CredolD v4 architecture allows efficient usage on low-power PCs for small systems, where only a few doors must be managed. However, it can easily scale up to a few thousand of controllers and doors. We do understand the challenge of managing huge lists of users, access levels and devices – therefore CredolD includes powerful search and filtering tools, as well as Active Directory integration for even further time savings.

Do you have your own system which requires access control? We're here for you – feel free to extend CredolD any way you like. It offers an open REST API, providing access to all features available through Web UI. Just give us a call or send an email for API documentation and a development license.





CREDROID FEATURES

- Unified and open hardware platform – combine several generations of controllers from different manufacturers and benefit from their advantages
- Modern WebUI with customizable dashboard
- Interactive floor plan, including event highlighting and key controls
- Advanced monitoring with persistent alerts and threat levels
- Multi-factor IDs, including built-in HID Origo and STid mobile credential management
- Interlock, Anti-passback, scheduled door modes and Holiday exceptions
- Elevator control and wireless lock support
- Rule-based automations and custom scripts
- Powerful filtering and search capabilities
- Active Directory support
- Extensive report engine, including Time And Attendance data
- Role-based Operator permissions
- Logical DB segmenting (e.g. by buildings, floors, tenants, etc.)
- Mobile Manager™ application for iOS and Android
- Checkpoint™ Mobile reader-controller for guard tours, mustering and random checks
- ID badge template design and printing
- CCTV / VMS Integrations
- License plate recognition and parking management
- Integrated Visitor management and Workplace reservation systems
- Open REST API
- Multi-language support