

1. CONFIGURE MSSQL EXPRESS FOR MULTICOMPUTER SID SETUP

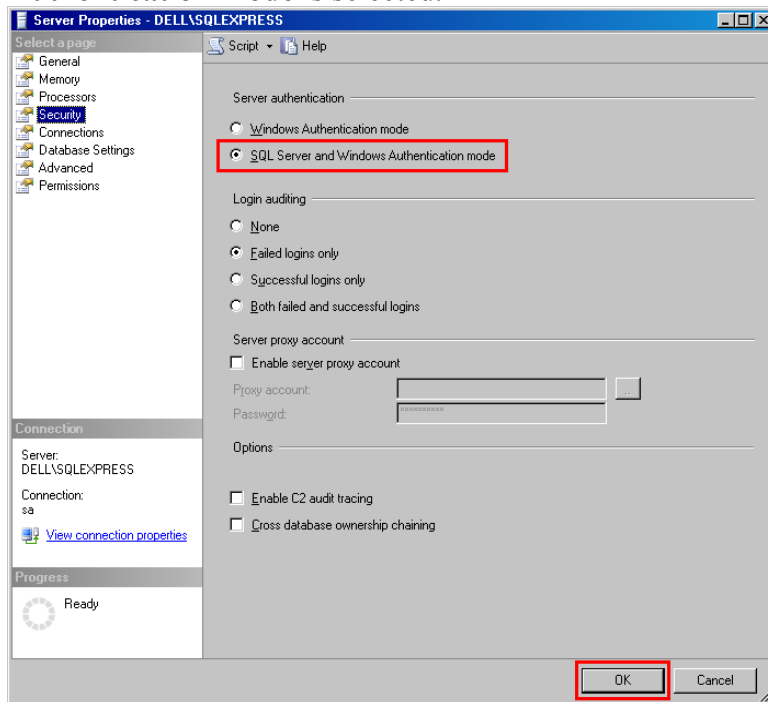
Prerequisites:

1. You must already have **MSSQL EXPRESS edition** installed on the server PC.
2. You must install **SQL Server Management Studio Express** if you haven't done so.
3. You must configure the settings mentioned below before installing SimpleID on any of the computers.

Enable SQL Server authenticated logins:

You have to enable the SQL server authentication. It is possible to do that either during installation, or by using **SQL Server Management Studio Express** tool.

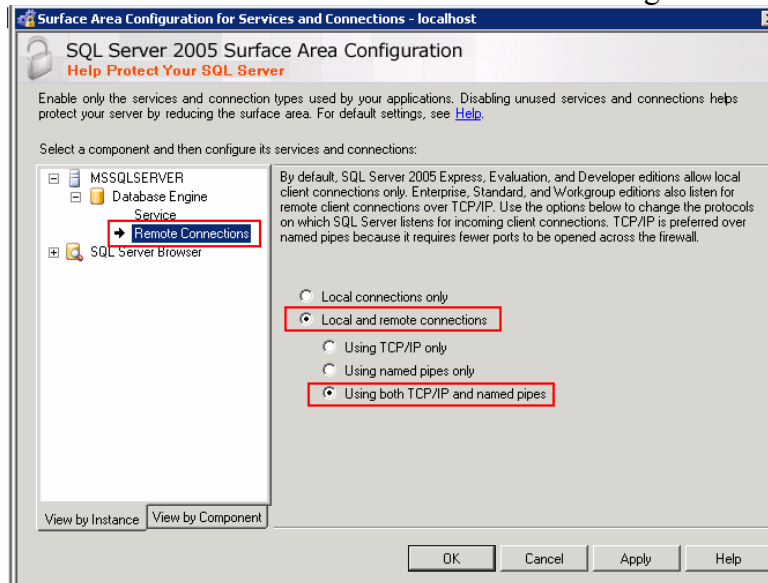
1. Start **SQL Server Management Studio Express** tool from „**Start->Programs->Microsoft SQL Server 2005->SQL Server Management Studio Express**“
2. Connect to the SQL server.
3. Right click on the server instance and select properties.
4. In the new window select **Security** page and make sure that **SQL Server and Windows Authentication mode** is selected.



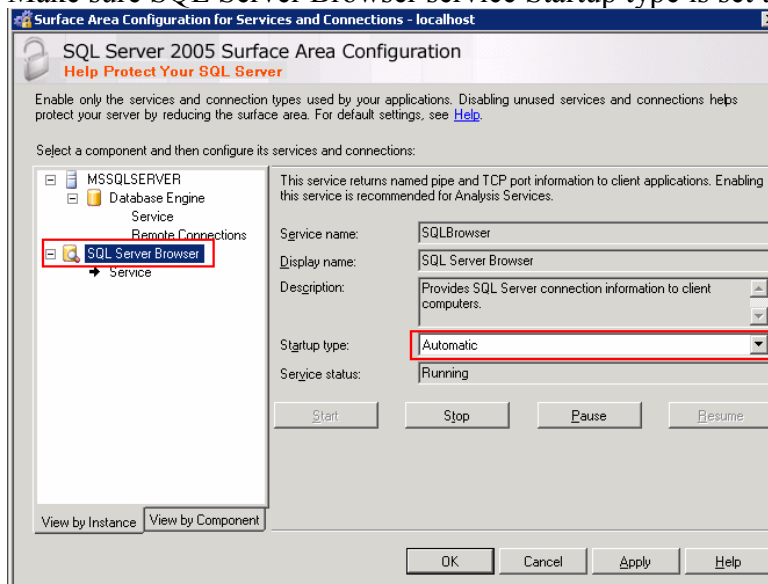
5. Click OK to close the window.

Enable SQL Server Remote connections:

1. Start SQL Server Surface Area Configuration
2. Click on “Surface Area Configuration for Services and Connections”.
3. Select “Remote Connections” node.
4. Select “Local and remote connections” and “Using both TCP/IP and named pipes”.



5. Make sure SQL Server Browser service Startup type is set to Automatic.

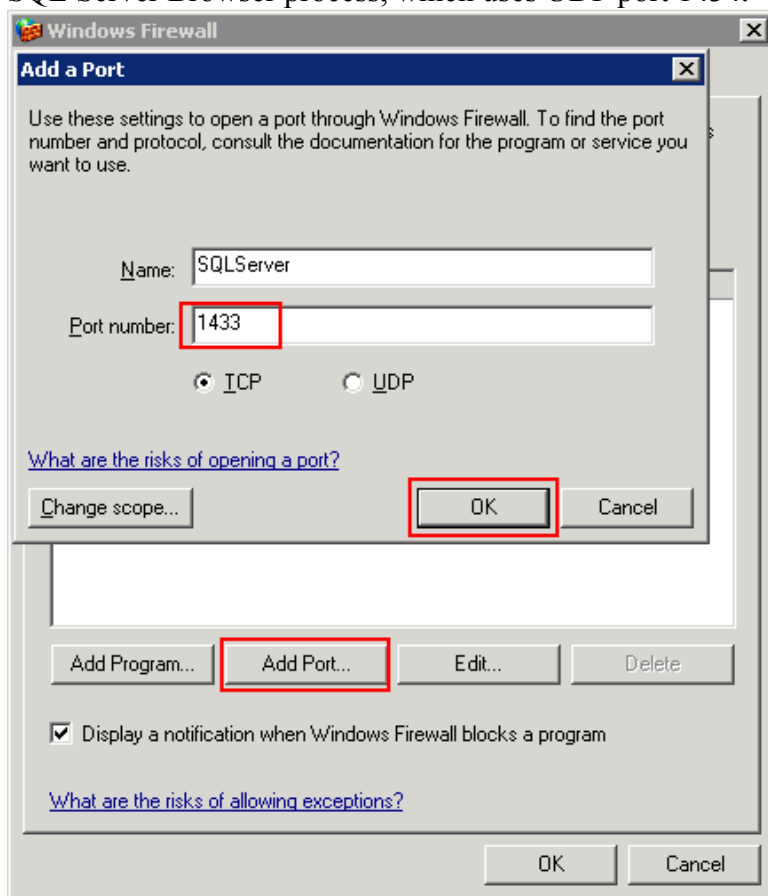


After you have done this, you need to restart SQL Server

Configure Windows firewall:

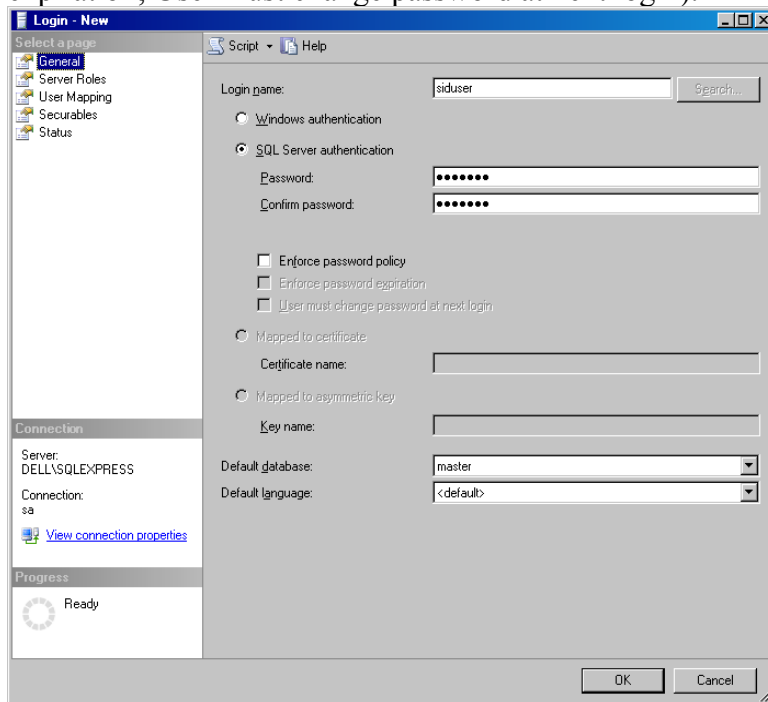
Disabling the Windows Firewall is extremely dangerous if the computer is connected to the Internet. You should add 2 port exceptions in Windows Firewall for:

- 1) SQL Server process, which uses TCP port 1433.
- 2) SQL Server Browser process, which uses UDP port 1434.

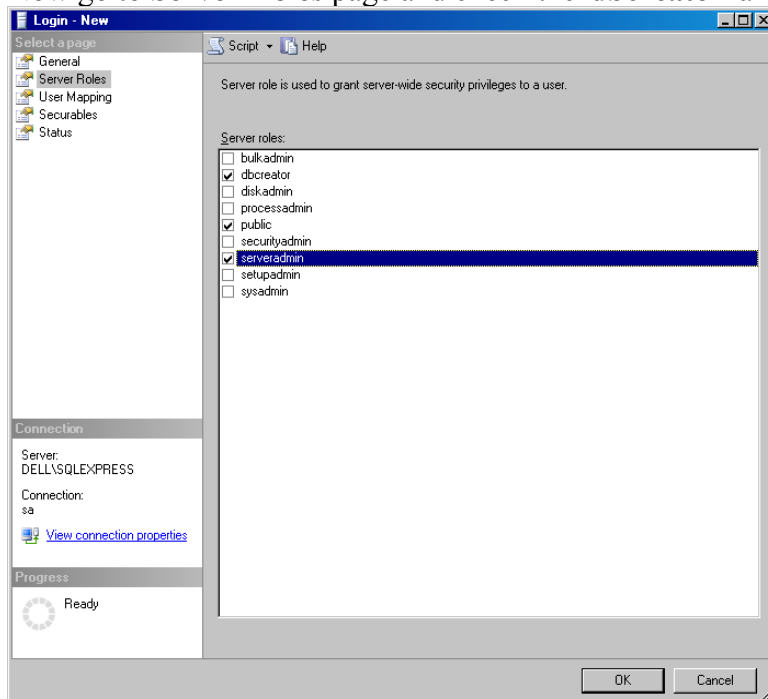


Creating a SQL user to use with SID:

1. Start **SQL Server Management Studio Express** and log-in to the server.
2. Go to **Security->Logins**. Right-click on a free space in the right side of the window and select **New Login**.
3. In the new window enter a user-name for the new user. In this example we will be using 'siduser' as the user-name and password.
4. After you enter the user-name, select **SQL Server authentication** and enter the password.
5. De-select all the password policy options (Enforce password policy; Enforce password expiration; User must change password at next login).



6. Now go to **Server Roles** page and check the '**dbcreator**' and '**serveradmin**' roles.



7. Press **OK** when you have done all the things mentioned above.

Now you are ready to do an advanced installation of SimpleID.

Advanced Installation of SimpleID:

1. Run “**Setup.exe**” to launch the installation application of SimpleID.
2. Press '**Next**' in the new window.
3. Press the '**Advanced Install**' to customize your installation.
4. If this is the Server PC, you have to install only the '**Simple ID Controller Communication Service**'. If this is a client PC, then you have to install '**Simple ID**' component. If this is a client/server PC, install '**Simple ID Controller Communication Service**' and '**Simple ID**' components. When you are done selecting the components, click '**Next**' to continue.
5. Enter the Server-name and the database-name to use with SID. Click '**Next**' to continue.
6. Now select '**SQL Authentication**' and enter the user credentials for the DB user you have created. Click '**Next**' to continue.
7. If you want you can change the installation path of SID. Click '**Next**' when you are done.
8. Click '**Next**' to continue.
9. When the installation is completed, press '**Finish**' to end the installation application.

That's it. You have installed SimpleID.

Things to check if something is wrong:

1. Try to connect with newly created user with SQL Server Management Studio Express
2. If that works you need to try and open SIDDB database.